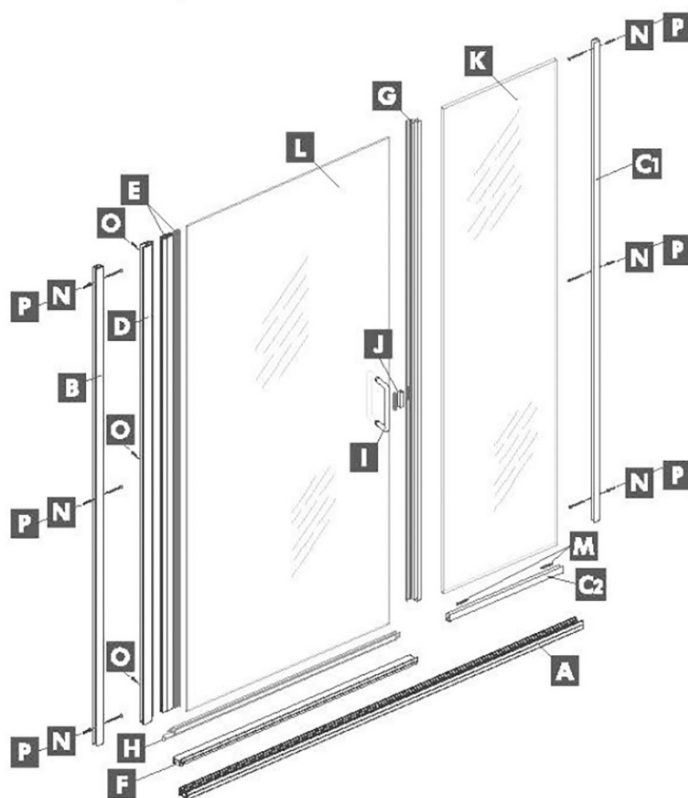


PARTS LIST

ITEM PART	DESCRIPTION	QTY
A ZSS-3101	Curb	1
B ZD-1006	Wall Channel for Hinge Jamb	1
C1 ZSS-4104	Deep Channel for 3/8" Glass Vertical place with pre-drilled holes	1
C2 ZSS-4104	Deep Channel for 3/8" Glass Horizontal place without drilled holes	1
D ZD-9505	Hinge Jamb	1
E ZD-2503B	Hinge Roll with Vinyl	1
F ZSS-1102	Curb Filler	1
G FAB4004	Polycarb Strike with Magnet	1
H	Polycarb Sweep	1
I	Through-the Glass Pull	1
J	Magnetic Catch with Glazing Vinyl	1
K	Fixed Panel (3/8" Clear Glass)	1
L	Door Glass (1/4" Clear Glass)	1
M	Glass Blocks	4
N	Screws #8x2 FLTHD	6
O	Screws #6x7/16 SELF TAPPING	3
P ZV935	Anchors GREY	6



STEP 1

Locate the centerline of the base by measuring and determining middle. Measure width of opening on this centerline and prepare to cut ZSS-3101 curb **A** 1/16" less than overall measurement. **(Figure 1)**



FIGURE 1

STEP 2

Once ZSS-3101 **A** is cut and tested to fit, apply a 1/4" bead of HMI X3 Premium Grade Silicone or equivalent, along the length of the underside of the curb **(Figure 2)** and set in place along centerline. Make sure weep hole is to the inside of the shower/tub.



FIGURE 2

Pro Install Tip: Firmly tape down curb after applying silicone so as not to bump it out of place during remainder of installation.

STEP 3

Place ZD-1006 channel **B** on wall where hinge side will be located and slide down into ZSS-3101 **A** until it rests on the legs inside the curb. It is important to a level* to make sure channel is plumb before marking pre-drilled holes. **(Figure 3)** Once plumb, mark holes then remove channel and prepare drill.



FIGURE 3

STEP 4

Using a HMI 3/16" Diamond Drill Bit or equivalent, drill your 3 marked holes. Once drilled, make sure to blow out and dry the holes then fill the holes with HMI X3 Premium Silicone or equivalent. If support behind wall is not present use the provided anchors. Gently tap the anchors (3) ZV935 Grey in until flush with wall. **(Figure 4)**

Pro Install Tip: For best result when using HMI Diamond Drill Bits, place the drill bit at an angle to the wall as you start to drill, then angle up so it is perpendicular to the wall and continuing to drill **(Figure 4)** Make sure to remove debris and any moisture from holes prior to applying silicone.

STEP 5

Using HMI X3 Silicone, fill the bottom inside corner on the hinge side of the installed curb **A** then set ZD-1006 **B** back in place in the curb and run (3) screws #8x2 FLTHD in until snug. Be careful not to over tighten **(Figure 5)**

STEP 6

Repeat steps 3, 4 and 5 using ZSS-4104 channel **C1** (Vertical channel wit holes) on fixed panel side of opening. Using (3) #8x2 FLTHD screws and (3) ZV935 Grey anchors **(Figure 5)**.

STEP 7

With wall channels securely in place, it's time to dry fit the door and panel. Place ZSS-4101 **C2** (Horizontal piece with no holes) down into ZSS-3101 **A** and slide over to butt against the vertical ZSS-4104 **C1** installed to the wall. **(Figure 6)**

Place two 1/8" glass blocks **M** into ZSS-4104 channel **C2**, one on each side, set about 2" in from the ends. Carefully set 3/8" glass panel **K** down in ZSS-4104 **C2** and onto glass blocks **M**. Slide panel over into vertical ZSS-4104 **C1** as far as possible towards the wall. **(Figure 7 & 8)**

Pro Install Tip: Install kits will have pairs of 1/8" Glass Blocks and 1/61" Glass Blocks included. We recommend using the 1/8" blocks for this installation. The thinner blocks can be used to correct outages if needed. **(Figure 9)**



FIGURE 9



FIGURE 4



FIGURE 5



FIGURE 6



FIGURE 7



FIGURE 8

PLEASE NOTE: Parts **D** Hinged Jamb, **E** Hinge Rail with Vinyl and **L** Door Glass will ship pre-assembled on complete units. For installation instructions below, reference to “Door” indicates the assembled door.

STEP 8

Take door and slide ZD-9505 **D** over ZD-1006 **B** as far as possible and temporarily set on ZSS-3101 curb **A**. Keep a hand on the door to prevent it from falling. Adjust door and panel equally until there is a vertically consistent 3/16” gap between both pieces of glass by sliding each towards the other until desired gap is achieved. It is important to adjust both pieces alternately as you adjust to avoid pulling on side out too far. **(Figure 10 & 11)**

STEP 9

Make sure top of door glass is even with top of panel glass. If not, using remaining 1/16” glass blocks to adjust panel up or down to equal height of door. With door and panel even and 3/16” gap confirmed, mark ZSS-4104 **C2** to cut flush with edge of 3/8” glass. **(Figure 12)** Once marked, carefully remove both door and panel glass. Remove and cut ZSS-4104 **C2** where marked and put back in place. Take measurement from the cut edge of the ZSS-4104 **C2** to the face of the ZD-1006 hinge jamb **B**. **(Figure 13)** Using this measurement, proceed to cut the ZSS-1102 Curb Filler **F** to this dimension, then snap the filler into ZSS-3101 Curb **A** making sure metal lip is to outside of unit **(Figure 14)**

STEP 10

Making sure glass blocks **M** are still in place, apply a bead of HMI X3 Premium Silicone or equivalent, in both horizontal and vertical ZSS-4104 **C1 C2**. Set 3/8” glass panel **K** back into place making sure edge of glass is flush with ZSS-4104 channel **C2**. **(Figure 15)**.



FIGURE 10



FIGURE 11



FIGURE 12



FIGURE 13



FIGURE 14

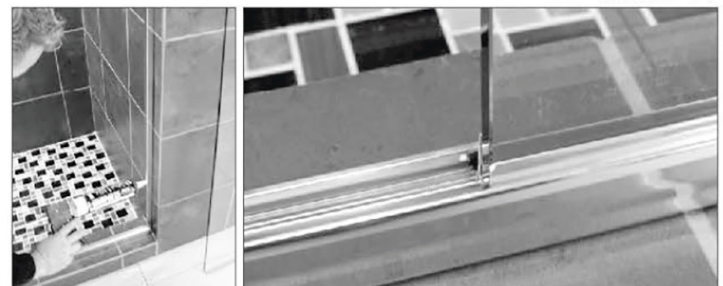


FIGURE 15

STEP 11

Set door back into place and adjust again to get 3/16" gap between panels. Make sure ZD-9505 hinge jamb is on ZSS-1102 curb filler. Using a #31 drill bit, drill two pilot holes in the ZD-9505 using top and bottom holes as template. Attach with 2- #6x3/8 screws. Completely open and close the door a few times, then drill the middle hole and attach with #6x3/8 screw. **(Figure 17)**

STEP 12

Attach FAB4004 polycarb strike **G** onto exposed edge of 3/8" glass panel and make sure it is adjusted down so that the bottom edge is also sitting on the ZSS-1102 curb giller **F**. **(Figure 18)**

Trim top if necessary to make flush with glass **(See detail A and Figure 19)**. Close door, apply vinyl and mag catch **J** so that they line up with magnet in FAB4004 **G**. Apply FAB984B **H** to bottom of door and fabricate if necessary. **(See detail B and Figure 20 for options)**.

STEP 13

Attach back-to-back handle and run bead of HMI X3 Premium Silicone or equivalent along entire inside and outside of unit. Be careful not to clog up the weep hole in the curb.



FIGURE 16



FIGURE 17



FIGURE 18

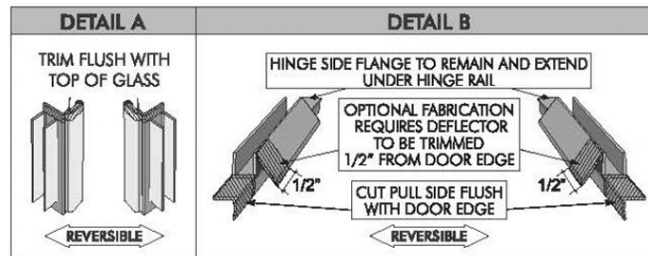


FIGURE 19

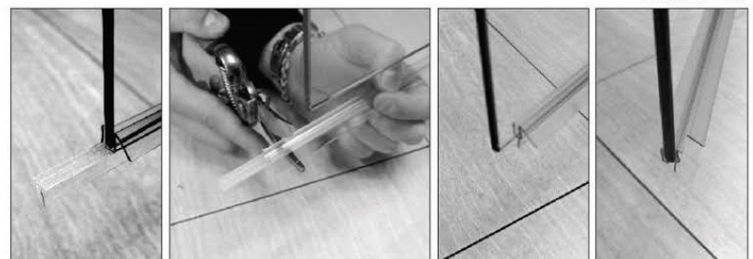


FIGURE 20